

- 1- Install ownCloud plugin
- 2- Go to the Plugins zone and active ownCloud service:

Reporting x Settings x System Information x Jails x Plugins x Services x

Plugins Configuration

Available

Refresh Upload

Name	Description	Version
Bacula SD	Backup is a set of backup / recovery / verification scripts.	5.2.12_3
Bit Torrent	Transmission is a cross-platform BitTorrent client	2.77_1
CouchPotato	An automatic NZB and torrent downloader.	1.0
DLNA / UPnP	MiniDLNA server, fully compliant with DLNA/UPnP-AV clients.	1.0.25_1
mt-daapd	FireFly media server streams digital music to Roku / iTunes servers	1696_8
ownCloud	Owncloud is a system for the creation and management of personal cloud resources.	5.0.11
Plex Media Server	The popular Plex Media Server	0.9.8.6.175
SABnzbd	SABnzbd is an Open Source Binary Newsreader	0.7.14
SickBeard	Sick Beard is a PVR for newsgroup users.	1.0

Installed

Plugin name	Version	PBI	Jail	Service status	Actions
Owncloud	5.0.11	owncloud-5.0.11-amd64	owncloud_1	ON	Delete

- 3- Click on onwCloud in Plugins

expand all collapse all

Reporting x Settings x System Information x Jails x Plugins x Services x

Jails Configuration

Add Jails

Jail	Autostart	Status	Type
owncloud_1		Running	pluginjail

ownCloud

Click [here](#) to access your ownCloud!

- 4- Create an account
- 5- Install the Windows client:

Welcome to ownCloud

Your personal web services. All your files, contacts, calendar and more, in one place.

Get the apps to sync your files

Desktop app
Windows, OS X, Linux

ANDROID APP ON Google play

Available on the App Store

Connect your desktop apps to ownCloud

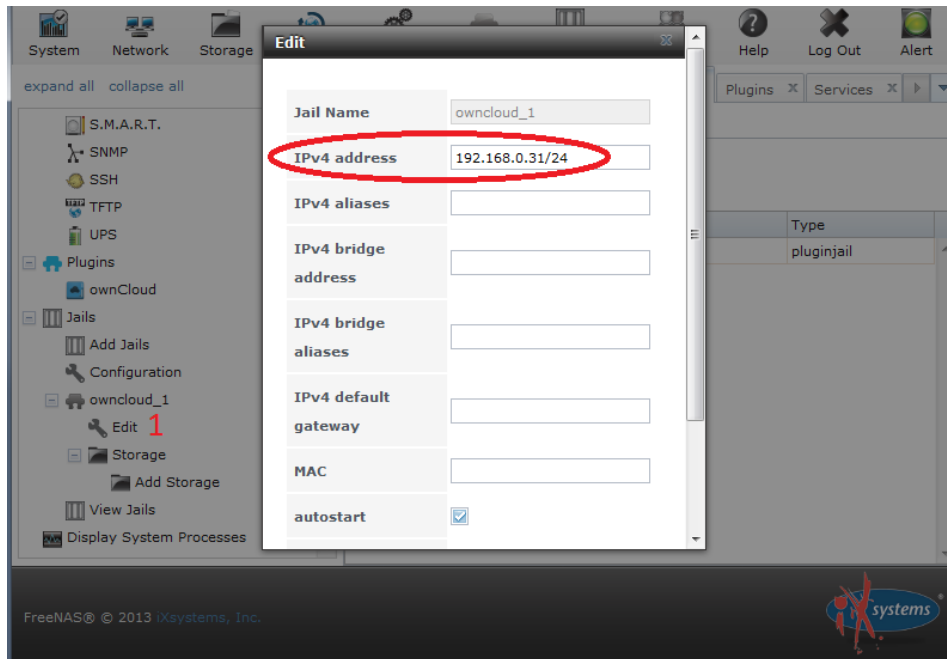
Connect your Calendar Connect your Contacts Access files via WebDAV

There's more information in the [documentation](#) and on our [website](#).
If you like ownCloud, [recommend it to your friends!](#)

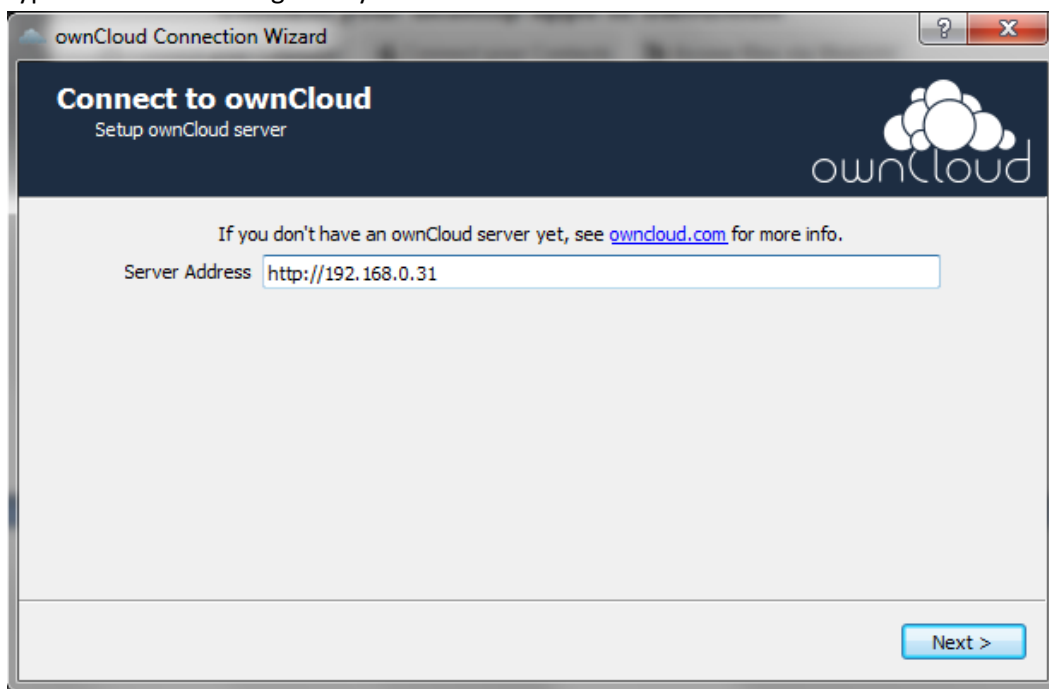
Customize...

- 6- Double-click on ownCloud icon to start the Wizard:

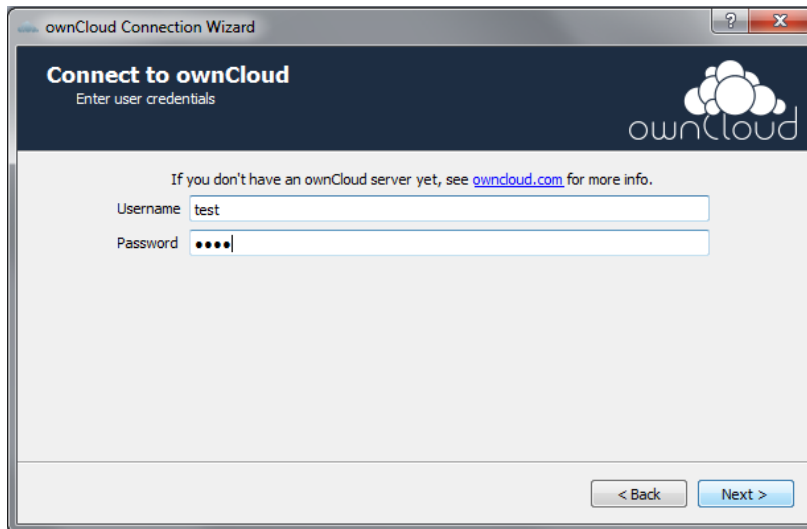
7- Get the IP address given by FreeNas to ownCloud:



8- Type in the IP address given by FreeNas to ownCloud:



9- Identify yourself with a previously created account:



The image shows a window titled "ownCloud Connection Wizard" with a dark blue header. The header contains the text "Connect to ownCloud" and "Enter user credentials" on the left, and the ownCloud logo on the right. Below the header, there is a line of text: "If you don't have an ownCloud server yet, see owncloud.com for more info." Below this, there are two input fields: "Username" with the text "test" and "Password" with four dots. At the bottom right, there are two buttons: "< Back" and "Next >".

ownCloud Connection Wizard

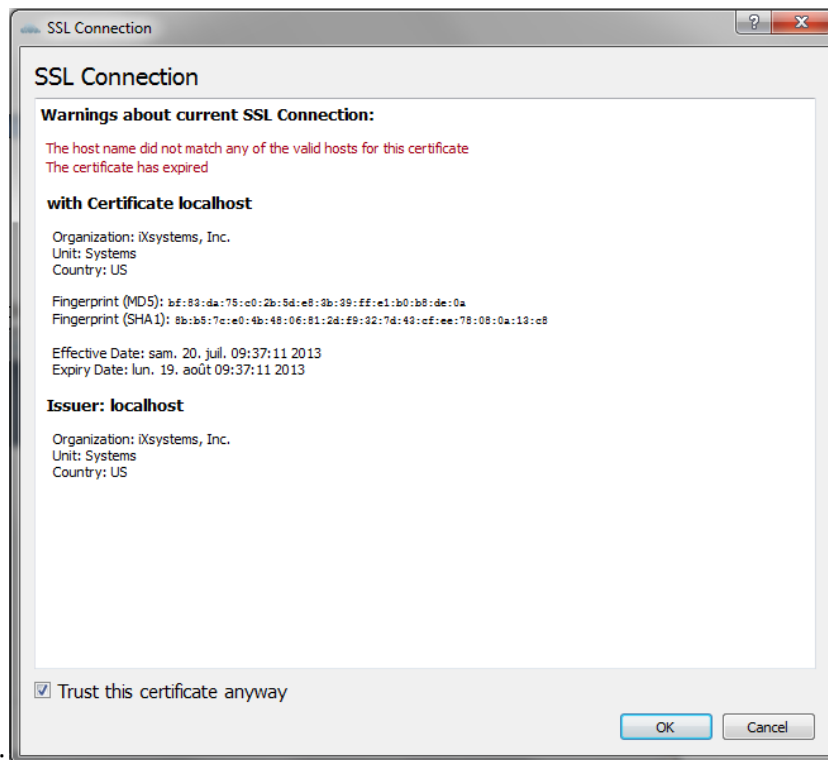
Connect to ownCloud
Enter user credentials

If you don't have an ownCloud server yet, see owncloud.com for more info.

Username test

Password ●●●●

< Back Next >



10- ???:

